

CV Spacer Kit

GM 1500 | 1999-2006
Part #: 071603

Rev. 062822



491 W. Garfield Ave., Coldwater, MI 49036 • Phone: 517-279-2135

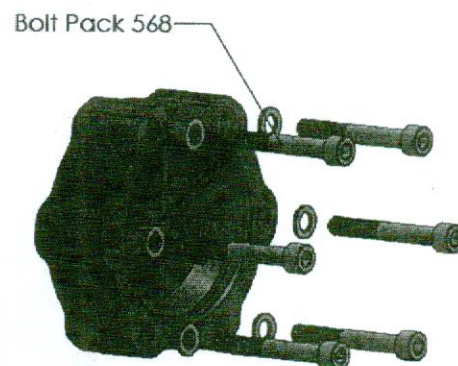
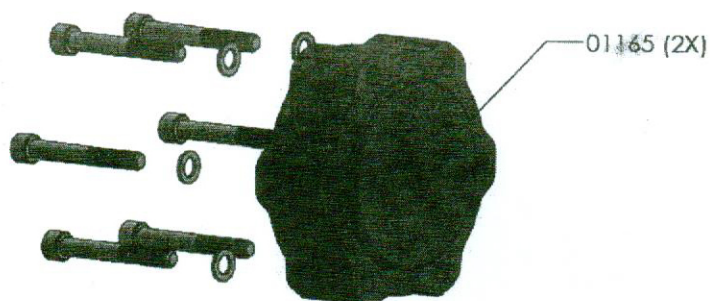
Web: www.bds-suspension.com • E-mail: tech-bds@sporttruckusainc.com

Bag Kit B1539

Part #	Qty	Description
01165	2	CV Spacer
568	1	Bolt Pack

SAFETY WARNING

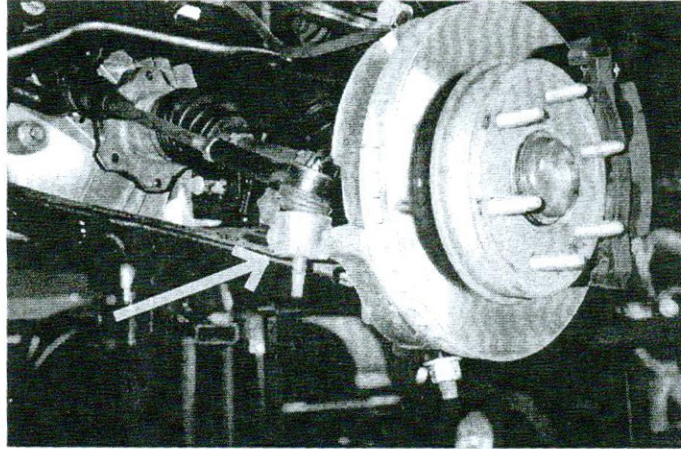
BDS Suspension Co. recommends this system be installed by a professional technician. In addition to these instructions, professional knowledge of disassembly/ reassembly procedures and post installation checks must be known.



INSTALLATION INSTRUCTIONS

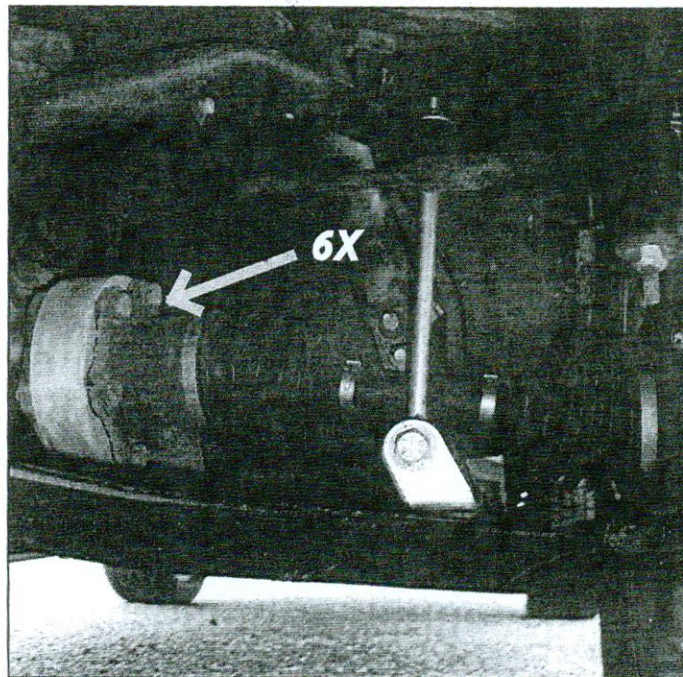
1. Park the vehicle on a clean, flat surface and block the rear wheels for safety.
2. Raise the front of the vehicle and support with jack stands at each frame rail behind the lower control arms.
3. Remove the front wheels.
4. Disconnect the sway bar end link from the sway bar and u-bracket from the lower control arm. Leave sway bar link attached to lower u-bracket. Save mounting hardware.
5. Disconnect the tie rod end from the steering knuckle and reinstall nut a few turns by hand. Strike the steering knuckle at the tie rod end to dislodge the end (Fig. 1). Take care not to damage the tie rod end. Remove and retain nut.

FIGURE 1



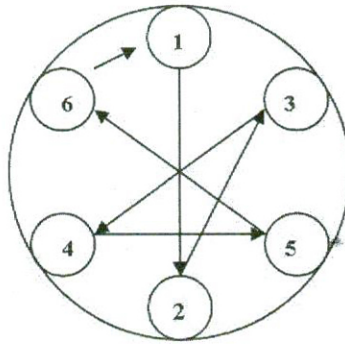
6. Disconnect CV axle from the differential by removing the six mounting bolts (Fig. 2).

FIGURE 2



7. Slide CV axle outwards from the differential and remove CV spacer. Take care to not damage mating axle inner shaft flange. Inspect CV boots at this time, if damaged replace according to OE specifications.
8. Inspect axle inner shaft flange. Ensure axle shaft flange surface is free of debris, clean as necessary.
9. Apply thread locker to six 10mm x 70mm SHCS (Bolt Pack 568) and install washers onto bolts. Align CV axle flange, CV spacer (01165), and axle shaft flange. Install bolts. Torque bolts in a crossing pattern (Fig. 3) to 55 ft-lbs.

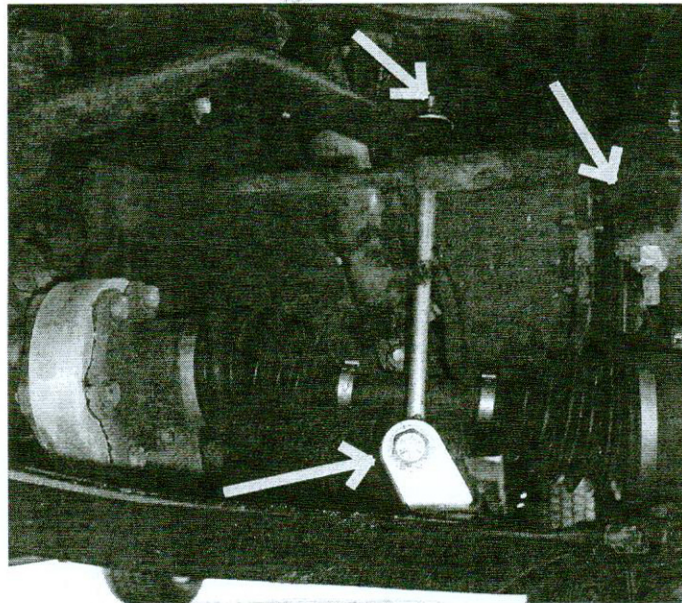
FIGURE 3



Six-Bolt

10. Ensure sway bar is above the tie rod end. Orient the tie rod end to mount top-down into the knuckle (Fig. 4). Torque tie rod retaining nut to 37 ft-lbs.
11. Reattach sway bar link u-bracket to the lower control arm, the bracket will be offset toward the inside of the vehicle. Torque lower bolt to 55 ft-lbs, torque upper stem nut to 15 ft-lbs (Fig. 4). Do NOT overtighten stem nut.

FIGURE 4



12. Install the front wheels and tires. Lower vehicle to the ground and torque lug nuts to OE specifications.

POST INSTALLATION

13. Double check all fasteners for proper torque.
14. Check all moving parts for clearance. Complete a full radius turning check to ensure that no interference occurs.
15. Complete a vehicle alignment to OE specifications, taking into account larger tires, if installed.
16. Check all fasteners after 500 miles.

TIME TO HAVE SOME FUN

Thank you for choosing BDS Suspension.

For questions, technical support and warranty issues relating to this BDS Suspension product, please contact your distributor/installer before contacting BDS Suspension directly.