



OUTLAW S E R I E S

Installation Instructions

817845

2017-20 DODGE CHARGER R/T & DAYTONA 5.7L ENGINE

This kit only fits vehicles with integrated rear exhaust bezels; it does not fit vehicles with traditional bumper/tip cutouts.

OVERVIEW:

1. Take a moment to read and understand these instructions before installing your Flowmaster performance system.

NOTE: Please inventory all parts now before continuing and if necessary, report any missing items to our tech line. This will avoid potentially stranding your vehicle until any missing replacement parts arrive.

ITM #	PART #	DESCRIPTION	QTY.
1	26724S	Scavenger Pipe	1
2	26631S	Right Tailpipe	1
3	26633S	Left Tailpipe	1
4	15430-253	Muffler	2
N/A	PK868	Hardware Package includes:	1
5	MC250BS	2½" Clamp	2
6	MC300BS	3" Clamp	4
7	HW502	7/16" Hanger Keeper	2
8	HW512	Standoff	6
9	HW243	¼" Screw	6
10	HW240	¾" Screw	6
11	HW315	Flat Washer	6

REMOVE STOCK EXHAUST SYSTEM:

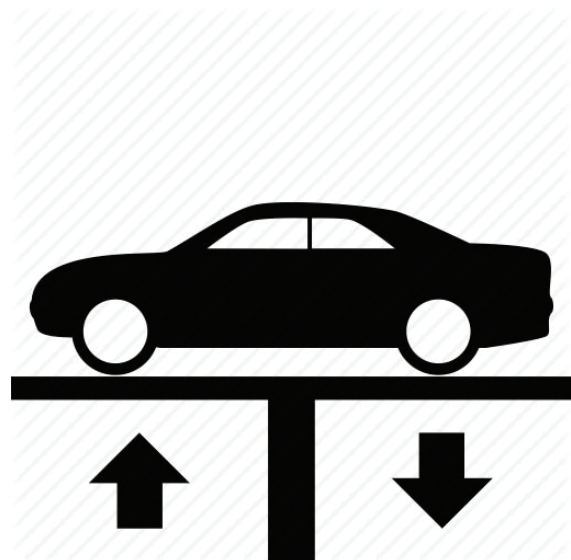
2. Raise vehicle up on a hoist or rack to working height. If you don't have access to a hoist or rack, support vehicle with jack stands.

WARNING:

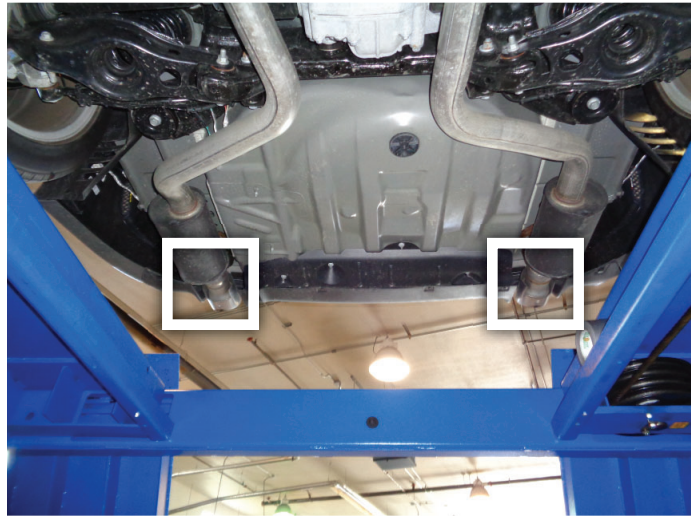
Avoid serious burns! Allow your vehicle time to cool completely before touching any factory engine components.

To ease preparation and installation of your new kit:

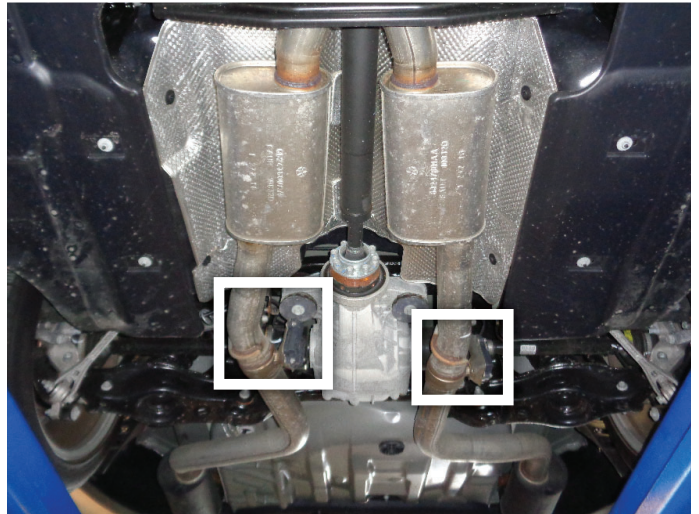
- Apply penetrating lubricant to mounts, bolts and clamps before you remove them.
- Use stands as necessary to support parts as you detach them from your vehicle and again as you install new parts.



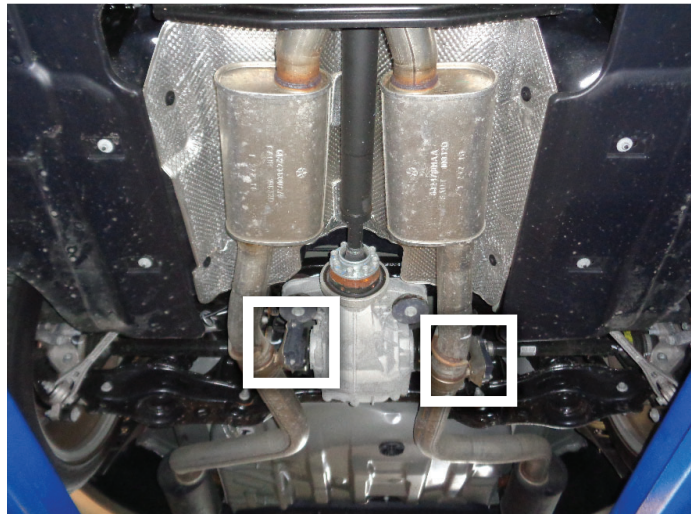
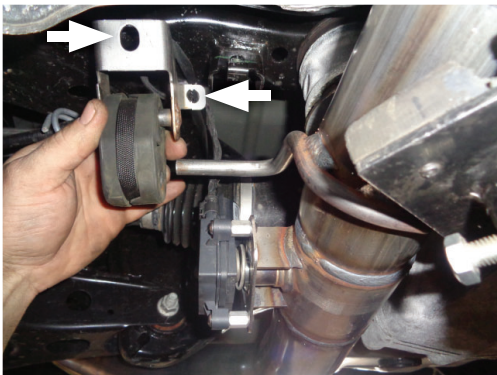
3. Remove bolt and mount supporting driver side tailpipe. Retain bolt and mount for re-use. Repeat step for passenger side tailpipe.



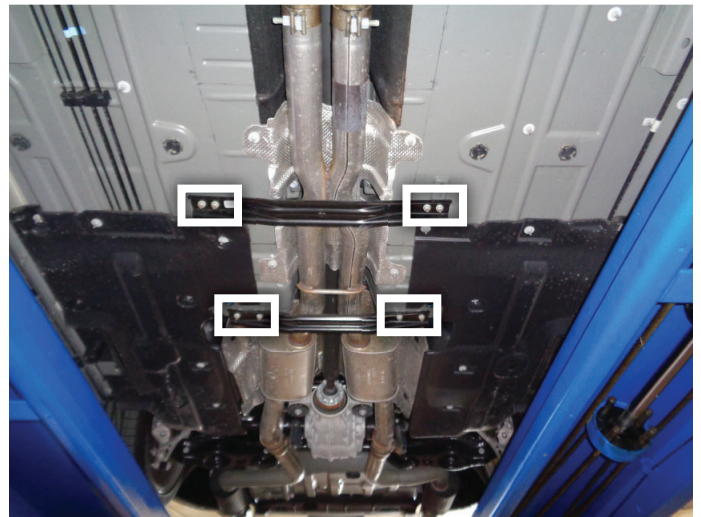
4. Unplug wire from driver side exhaust valve actuator. Repeat step for passenger side exhaust valve actuator.



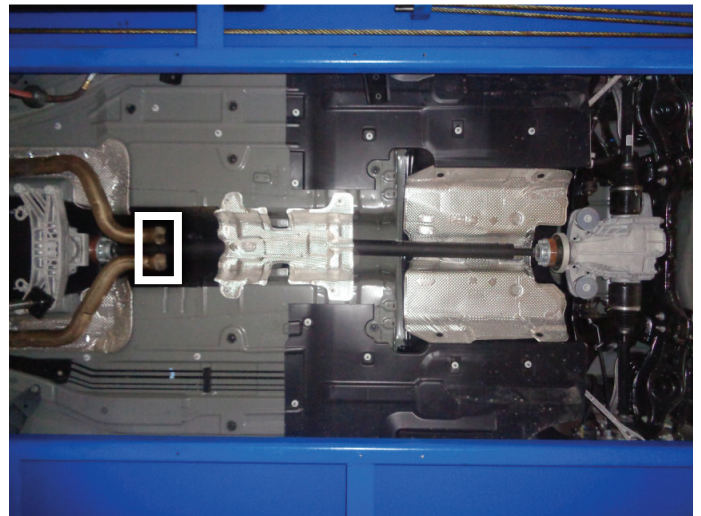
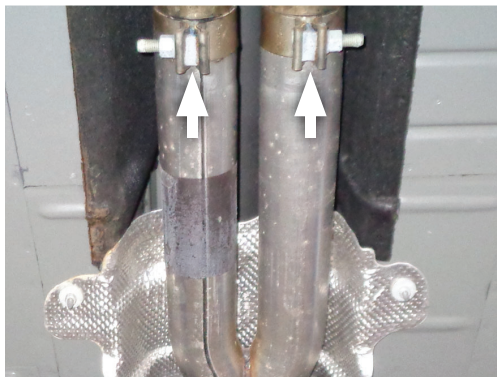
5. Unclip grounding strap and slide wire hanger out of rubber isolator on driver side tailpipe. Next, unbolt mount, flip it around and reinstall. Repeat step for passenger side tailpipe.



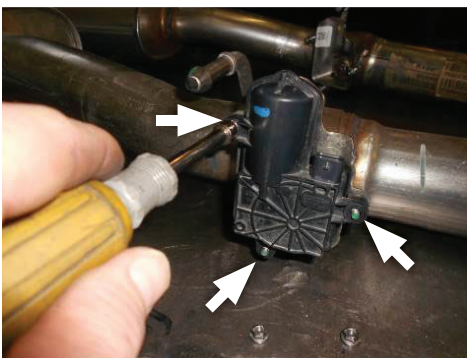
6. Remove nuts (x8) to uninstall braces supporting rear pipes. Retain nuts and braces for re-use.



7. Loosen clamps (x2) connecting factory exhaust system to front pipes. Carefully slide system off of front pipes to remove completely from vehicle.



8. Remove nuts (x3) then detach actuator and spring from mount on driver side tailpipe. Retain actuator and spring for re-use. Repeat step for passenger side tailpipe.



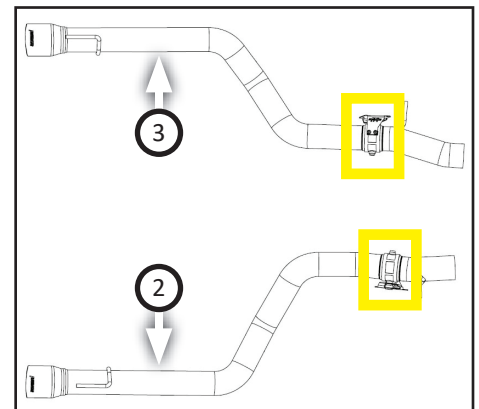
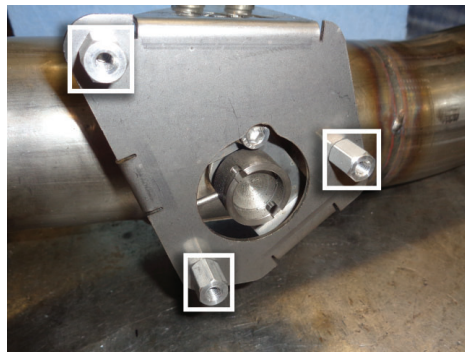
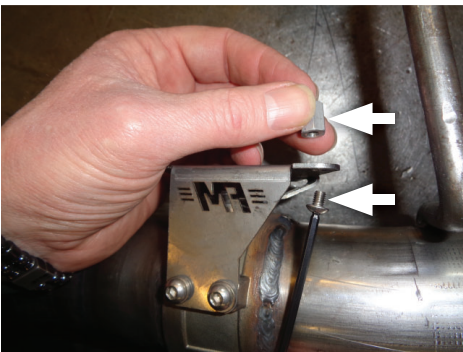
INSTALL FLOWMASTER EXHAUST SYSTEM

- Remove nuts from stock and Flowmaster clamps, apply anti-seize compound to bolts and re-install nuts.

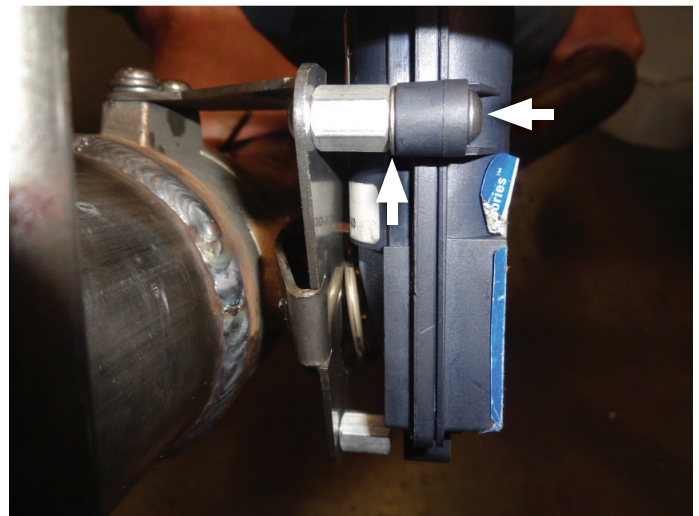
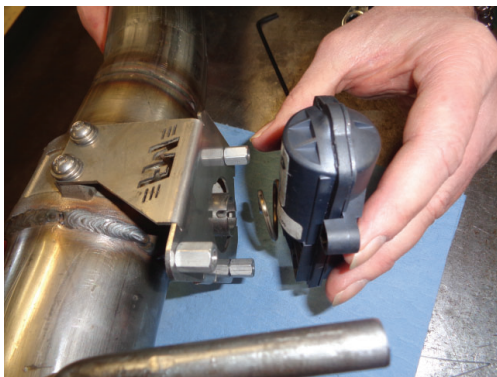
NOTE: The image in this step is intended for illustrative purposes only and may or may not accurately reflect components included in your kit.



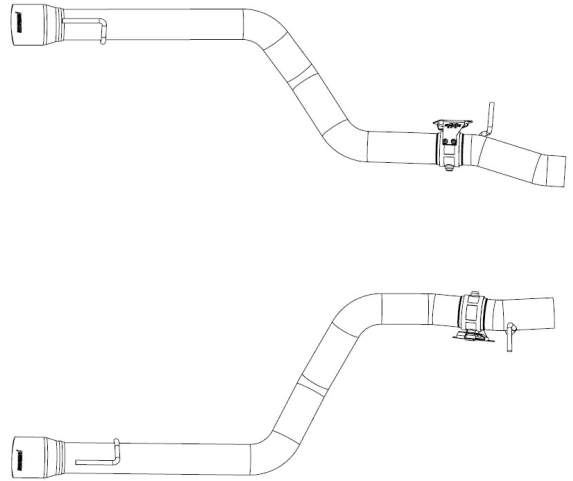
- Hand-tighten (x3) **screws (9)** through valve bracket and (x3) **standoffs (8)** onto **right tailpipe (2)**. Repeat step for **left tailpipe (3)**.



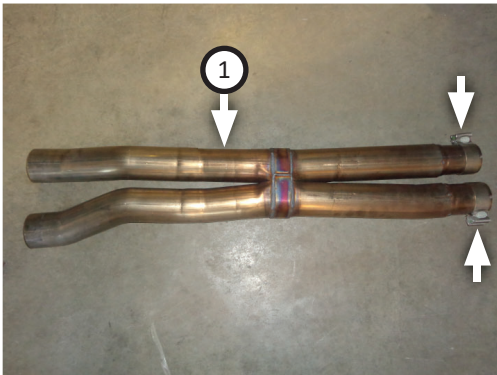
- Place driver side actuator onto left tailpipe valve bracket with (x3) **flat washers (11)** in between. Then secure components with (x3) **screws (10)**. Repeat step on right tailpipe (removed step 8).



12. Place factory mount from driver side tailpipe onto left tailpipe. Repeat step for right tailpipe (removed step 1).

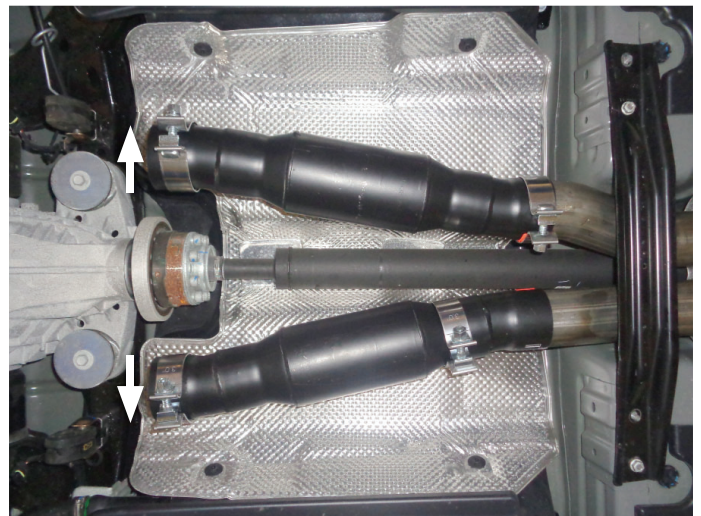


13. Place (x2) **clamps (5)** onto **scavenger pipe (1)** then connect it to front pipes. Tighten clamps enough to allow for adjustment. Re-install nuts (x8) and braces supports (removed step 6).

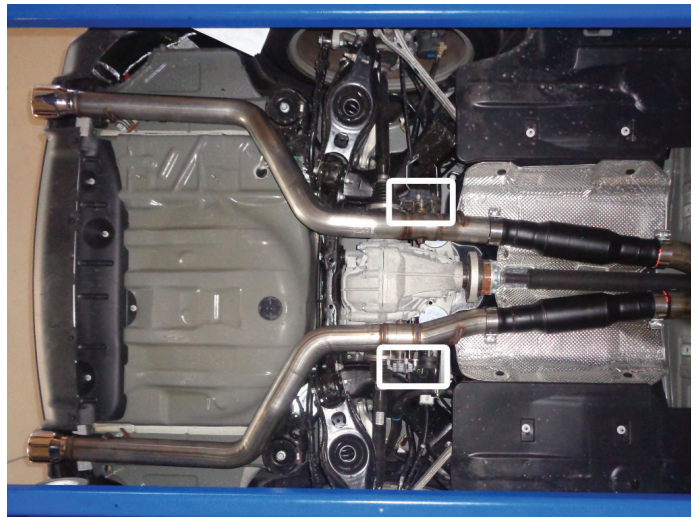
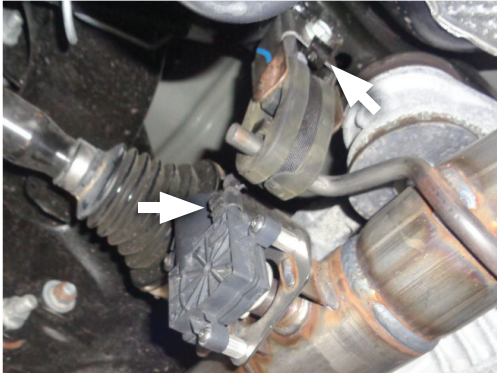


14. Place (x4) **clamps (6)** onto both **mufflers (4)** then connect them to scavenger outlets. Tighten clamps just enough to allow for adjustment.

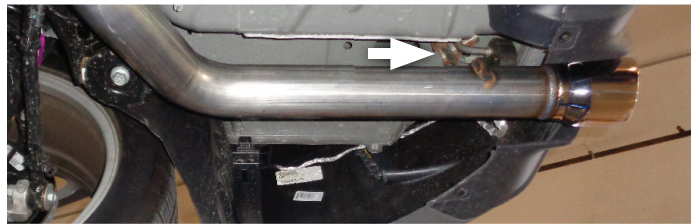
NOTE: Adjust mufflers so they are even horizontally.



15. Place left and right tailpipes into muffler outlets while seating wire hangers in rubber isolators. Then reconnect exhaust valve actuators and clip in grounding wires.



16. Fasten factory bolts and mounts into position to secure left and right tailpipes.
17. Adjust exhaust components for fit; maintaining $\frac{1}{2}$ " clearance and compensating for suspension, travel and vibration then tighten all clamps. Finally, fit (x2) **hanger keepers (7)** onto each sideways hanger.
18. Recommended: Secure slip-fit connections with a 1-inch tack weld then spray high-temp paint over each weld to prevent rust and premature corrosion.



Congratulations, the installation of your FLOWMASTER performance exhaust system is now complete!





OUTLAW[®]

S E R I E S

Installation Diagram
817845
2017-20 DODGE CHARGER R/T & DAYTONA
5.7L ENGINE

This kit only fits vehicles with integrated rear exhaust bezels; it does not fit vehicles with traditional bumper/tip cutouts.

