



Installation Instructions

817758

2015-20 DODGE CHARGER SRT 392 & R/T

SCAT PACK

6.4L ENGINE

DODGE CHARGER SRT HELLCAT

6.2L ENGINE

This kit retains factory MDS valve function.

OVERVIEW:

1. Take a moment to read and understand these instructions before installing your Flowmaster performance system.

NOTE: Please inventory all parts now before continuing and if necessary, report any missing items to our tech line. This will avoid potentially stranding your vehicle until any missing replacement parts arrive.

ITM #	PART #	DESCRIPTION	QTY.
1	26591S	Scavenger Pipe	1
2	26631S	Right Tailpipe	1
3	26633S	Left Tailpipe	1
4	853046-394	Muffler	2

ITM #	PART #	DESCRIPTION	QTY.
N/A	PK839	Hardware Package includes:	1
5	MC234BS	2¾" Stainless Band Clamp	2
6	MC300BS	3" Stainless Band Clamp	4
7	HW502	⅞" Hanger Keeper	2
8	HW512	10-32 x ½" Hex Stand-Off	6
9	HW243	10-32 x ¼" Screw	6
10	HW240	10-32 x ¾" Screw	6
11	HW315	#10 Flat Washer	6

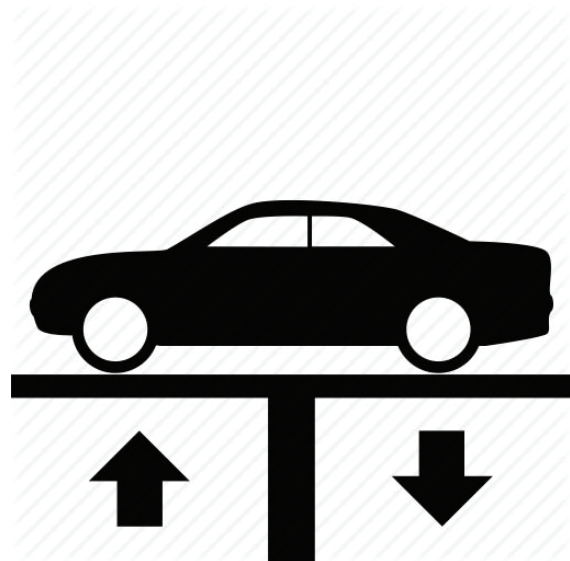
PREPARE VEHICLE FOR KIT INSTALLATION:

2. Raise vehicle up on a hoist or rack to working height. If you don't have access to a hoist or rack, support vehicle with jack stands.

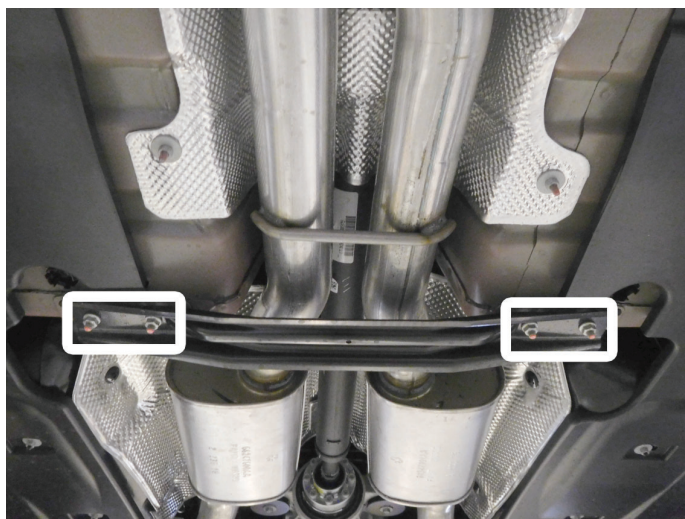
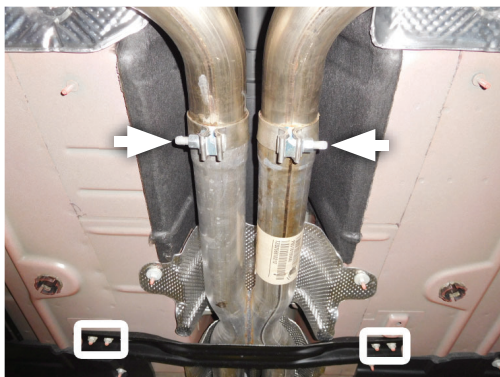
WARNING:
Avoid serious burns! Allow your vehicle time to cool completely before touching any factory engine components.

To ease preparation and installation of your new kit:

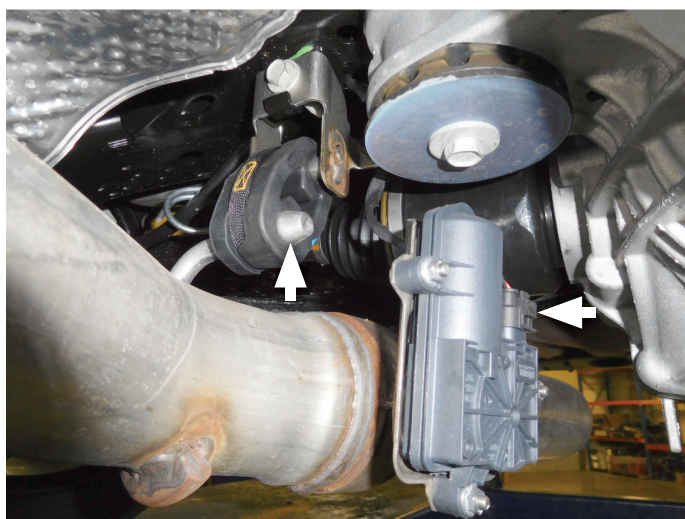
- Apply penetrating lubricant to mounts, bolts and clamps before you remove them.
- Use stands as necessary to support parts as you detach them from your vehicle and again as you install new parts.



3. Loosen clamps at slip fit connections behind catalytic converters. Then remove bolts attaching (x2) floor braces in center of vehicle.



4. Just forward of rear differential on either side of tailpipes, unplug wire from both exhaust valve actuators and tuck them away for later reconnection.



5. Unclip grounding strap from rear hanger on right side of vehicle, unbolt isolator mounts and with help, remove exhaust system and set it aside.



6. Remove (x3) nuts securing actuator to mounts on tailpipes. Remove actuator and spring from mount on each tailpipe.



INSTALL FLOWMASTER EXHAUST SYSTEM

7. Transfer isolator mounts over to corresponding tailpipes. Remove nuts from stock and Flowmaster clamps, apply anti-seize compound to bolts and re-install nuts.

NOTE: The image in this step is intended for illustrative purposes only and may or may not accurately reflect components included in your kit.



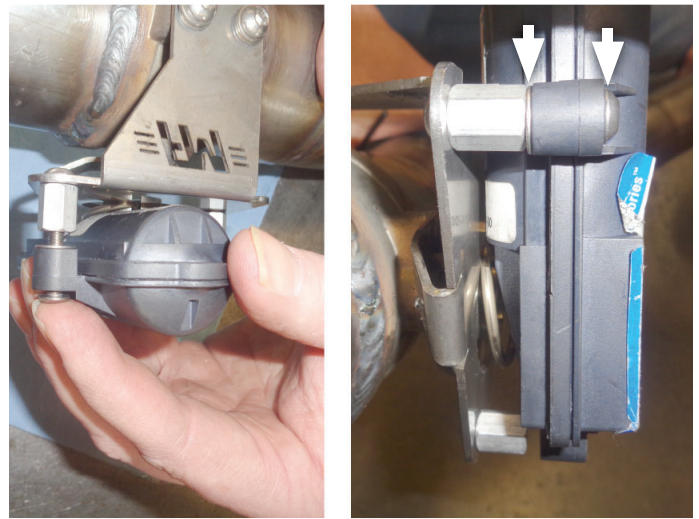
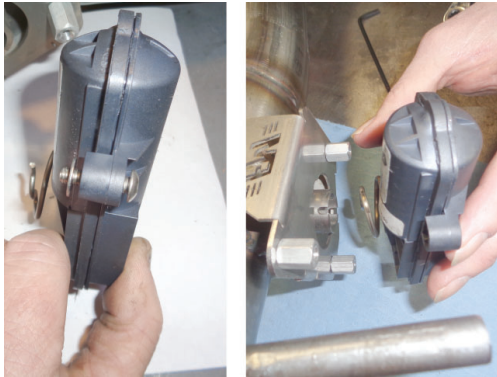
8. Place **screw (9)** through top hole of tailpipe bracket, then install **stand-off (8)** (with thread locker). Repeat action on remaining two holes.

NOTE: Complete step 8 on both tailpipe brackets.



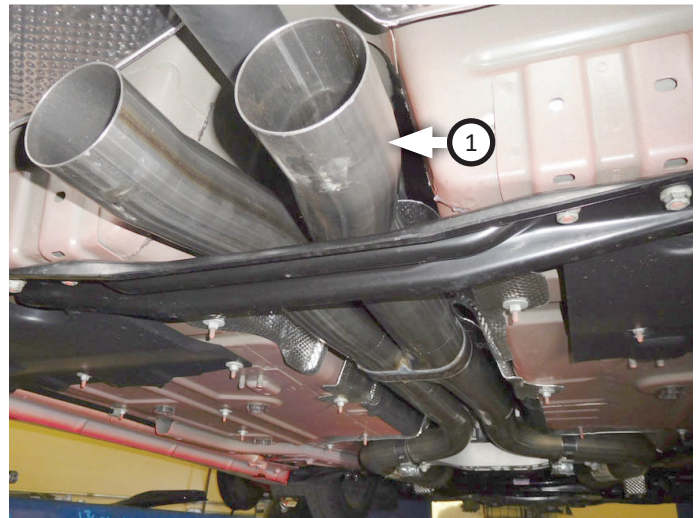
NOTE: Complete step 9 on both tailpipe brackets.

- Place **screw (10)** through actuator, **flat washer (11)** and thread it in standoff, with spring aligned. Fasten parts with (x2 ea.) remaining screws and flat washers.



NOTE: Check diagram for orientation of scavenger pipe. Once installed, Flowmaster logo must face ground.

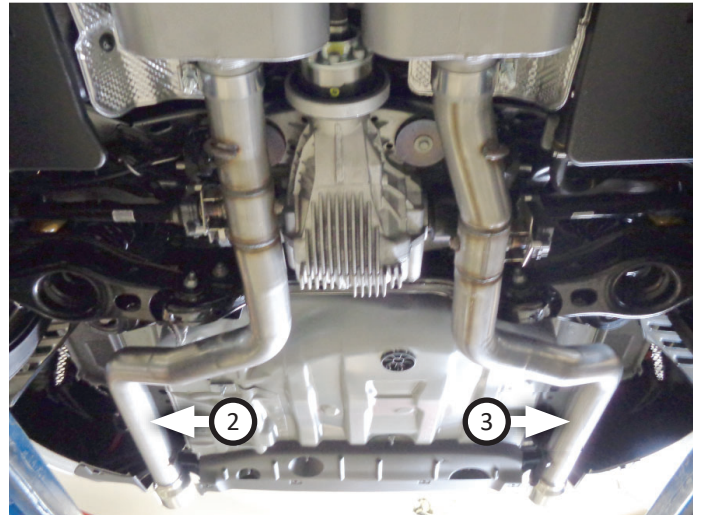
- Place (x2) **clamps (5)** onto **scavenger pipe (1)** then seat it 2" into head pipes. Level and center assembly then tighten clamps. Re-install floor brace (removed step 3).



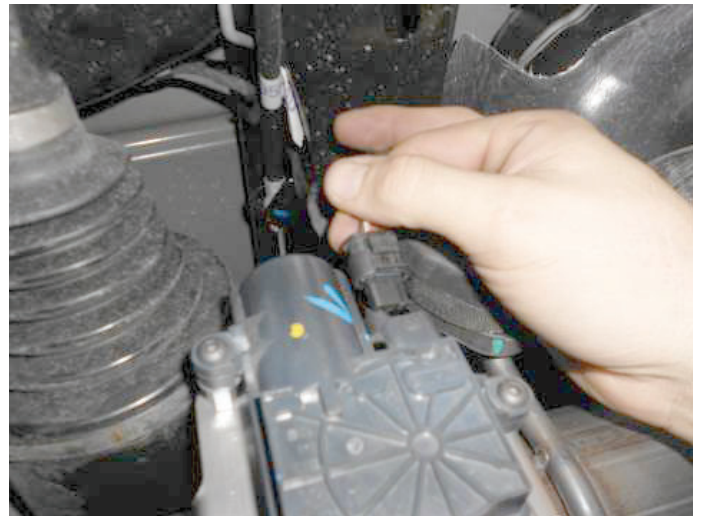
- Place (x2 ea.) **clamps (6)** onto **mufflers (4)** then connect them to scavenger pipe. Connections must seat $1\frac{3}{4}$ " in. Level mufflers and tighten clamps just enough to allow for later adjustment.



12. Place **clamp (6)** onto left muffler then connect **left tailpipe (3)**. Re-bolt isolator mount and adjust tailpipe until tip is level and centered in cut-out. Tighten clamp enough to hold parts. Repeat step for **right tailpipe (2)**.



13. Reconnect (x2) electrical plugs (removed step 4) back onto tailpipe actuators.
14. Adjust exhaust components for fit; maintaining 1/2" clearance and compensating for suspension, travel and vibration, then tighten all clamps. Fit (x2) **hanger keepers (7)** onto each sideways hanger.
15. Recommended: Secure slip-fit connections with a 1-inch tack weld then spray high-temp paint over each weld to prevent rust and premature corrosion.



Congratulations, the installation of your FLOWMASTER performance exhaust system is now complete!





Installation Diagram
817758
**2015-20 DODGE CHARGER SRT 392 &
R/T SCAT PACK**
6.4L ENGINE
DODGE CHARGER SRT HELLCAT
6.2L ENGINE

This kit retains factory MDS valve function.

