



Installation Instructions  
**717935**  
 2015-20 DODGE CHARGER SRT  
 6.2L, 6.4L ENGINES

**OVERVIEW:**

1. Take a moment to read and understand these instructions before installing your Flowmaster performance system.

**NOTE:** Please inventory all parts now before continuing and if necessary, report any missing items to our tech line. This will avoid potentially stranding your vehicle until any missing replacement parts arrive.

ITM #	PART #	DESCRIPTION	QTY.
N/A	PK839	Hardware Package includes:	1
5	MC234BS	2¾" Stainless Band Clamp	2
6	MC300BS	3" Stainless Band Clamp	4
7	HW502	¾" Hanger Keeper	2
8	HW512	10-32 x ½" Standoff	6
9	HW243	10-32 x ¼" Button Head Screw	6
10	HW240	10-32 x ¾" Button Head Screw	6
11	HW315	#10 Flat Washer	6

ITM #	PART #	DESCRIPTION	QTY.
1	26591M	Scavenger Pipe	1
2	71229-Z	FlowFX Muffler	2
3	26805M	Right Tailpipe	1
4	26806M	Left Tailpipe	1

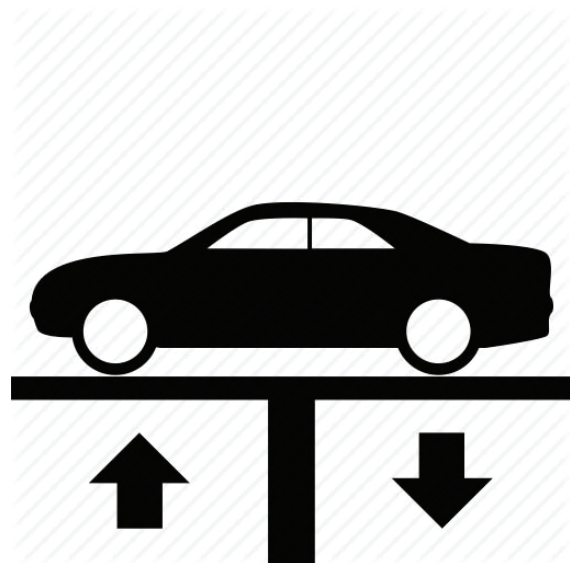
**REMOVE STOCK EXHAUST SYSTEM:**

2. Raise vehicle up on a hoist or rack to working height. If you don't have access to a hoist or rack, support vehicle with jack stands.

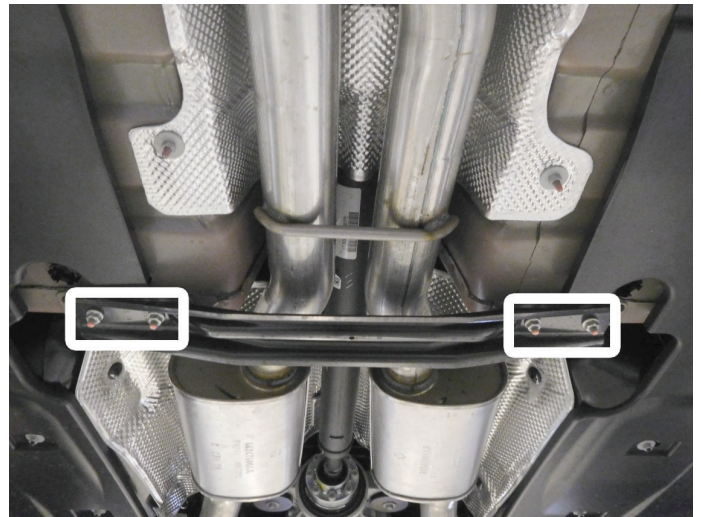
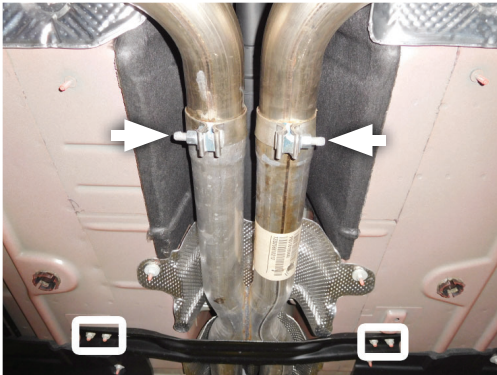
**WARNING:**  
 Avoid serious burns! Allow your vehicle time to cool completely before touching any factory engine components.

**To ease preparation and installation of your new kit:**

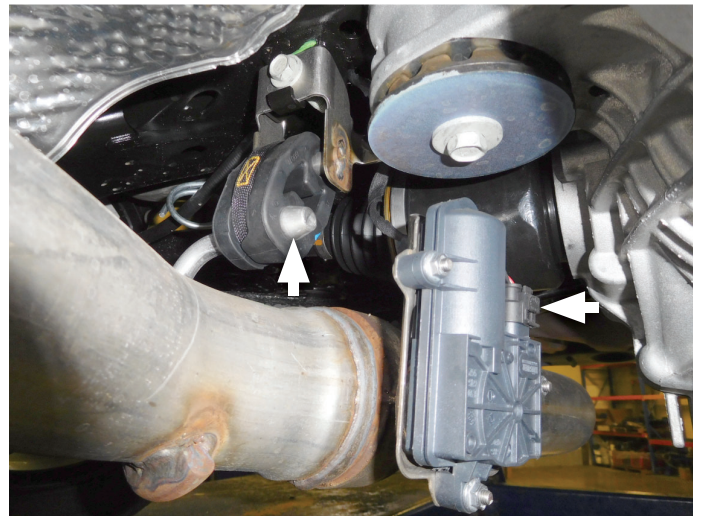
- Apply penetrating lubricant to mounts, bolts and clamps before you remove them.
- Use stands as necessary to support parts as you detach them from your vehicle and again as you install new parts.



3. Loosen clamps at slip fit connections behind catalytic converters. Then remove bolts attaching (x2) floor braces in center of vehicle.



4. Just forward of rear differential on either side of tailpipes, unplug wire from both exhaust valve actuators and tuck them away for later reconnection.

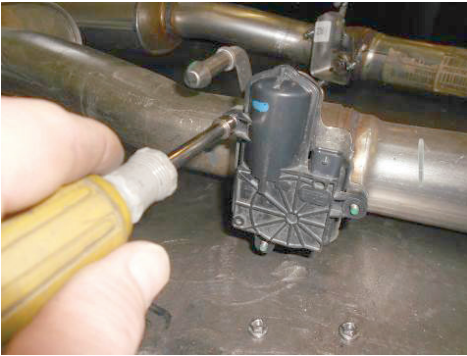


5. Slide (x3) hangers on each tailpipe out of rubber isolators on vehicle and unclip grounding strap from rear hanger on right side of vehicle. With help, remove exhaust system and set it aside.

**NOTE:** If it is too difficult to disengage any wire hangers out their isolators, you may instead unbolt isolator mounts and transfer them to your new system. Then, during install, re-bolt mounts back onto vehicle.



6. Remove (x3) nuts securing actuator to mounts on tailpipes. Remove actuator and spring from mount on each tailpipe.



## INSTALL FLOWMASTER EXHAUST SYSTEM

7. Remove nuts from stock and Flowmaster clamps, apply anti-seize compound to bolts and re-install nuts.

**NOTE:** The image in this step is intended for illustrative purposes only and may or may not accurately reflect components included in your kit.

8. Every slip fit connection in this kit must seat 3" deep except for muffler connections which must seat 2" deep. Find all slip fit components in your kit and mark them accordingly so your Flowmaster exhaust system fits properly onto your vehicle.



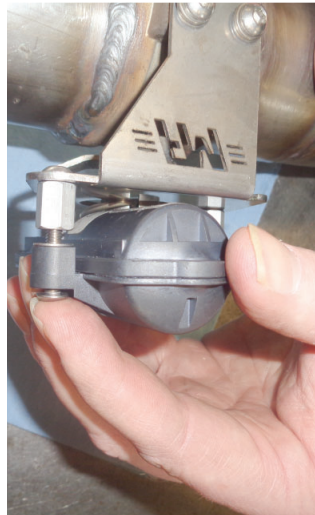
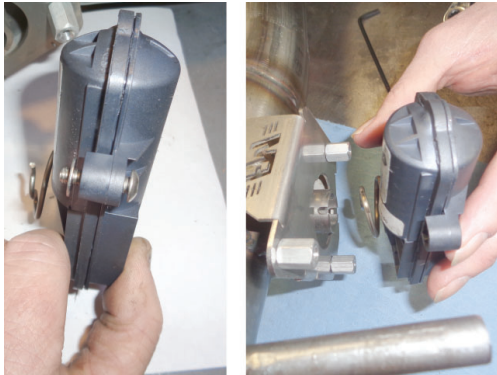
9. Place **screw (9)** through top hole of tailpipe bracket, then install **stand-off (8)** (with thread locker). Repeat action on remaining two holes.

**NOTE:** Complete this step on both tailpipe brackets.



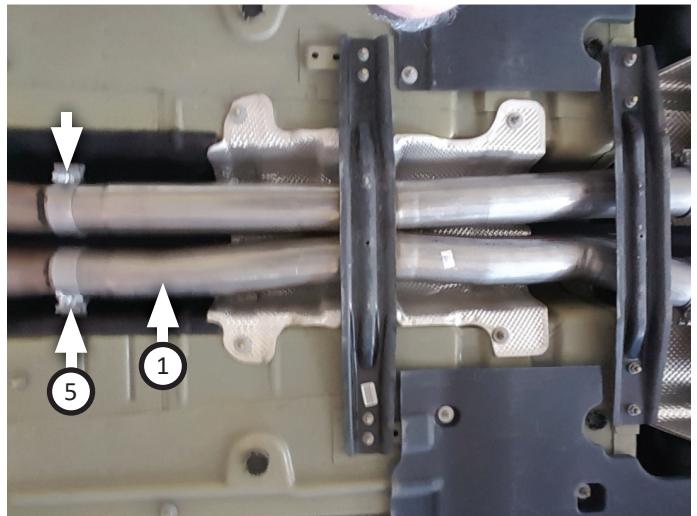
**NOTE:** Complete this step on both tailpipe brackets.

10. Place **screw (10)** through actuator and **flat washer (11)** then connect it to mount, with spring aligned. Align fastener holes then fasten parts with (x2 ea.) remaining screws and flat washers.

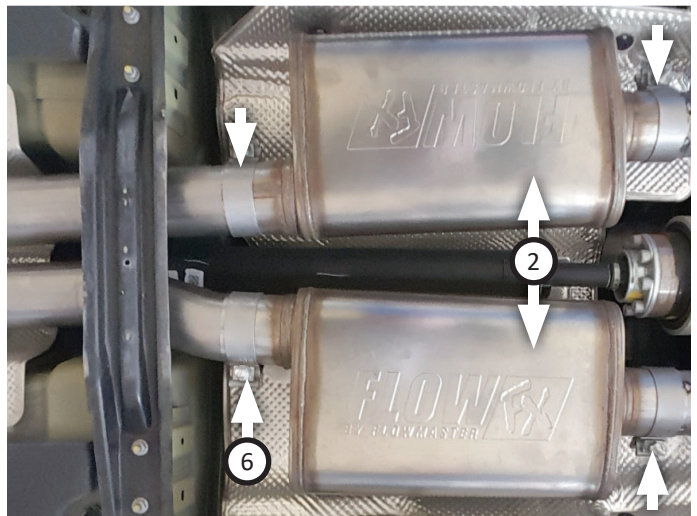


**NOTE:** Check diagram for orientation of scavenger pipe. Once installed, Flowmaster logo must face ground.

11. Place (x2) **clamps (5)** onto **scavenger pipe (1)** then connect it to head pipes. Level and center assembly then tighten clamps. Re-install floor brace (from step 3).

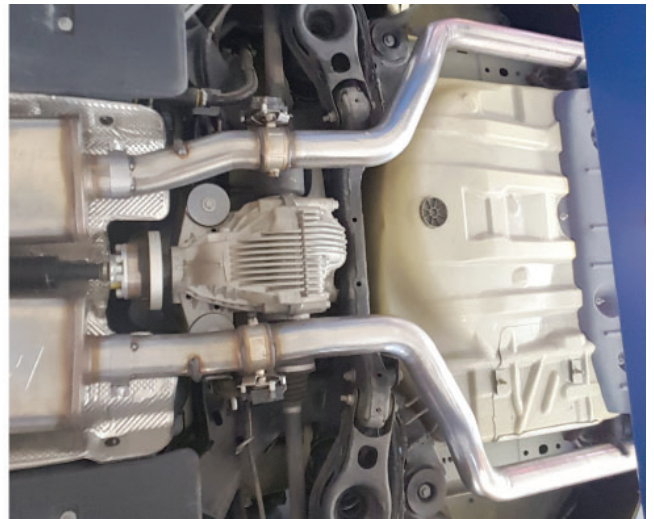


12. Place (x2 ea.) **clamps (6)** onto **mufflers (2)** then connect them to scavenger pipe. Level and center mufflers then tighten clamps just enough to allow for adjustment. Place (x2) **clamps (6)** onto muffler outlets.



13. Route **right (3)** and **left (4)** tailpipes over axle and connect them to mufflers. Insert wire hangers into isolators and adjust tailpipes until tips are level and centered in cut-outs. Tighten clamps just enough to allow for adjustment.

**NOTE:** If you unbolted isolator mounts, re-bolt them onto vehicle now.



14. Reconnect (x2) electrical plugs (removed step 4) back onto tailpipe actuators.
15. Adjust exhaust components for fit; maintaining ½" clearance and compensating for suspension, travel and vibration, then tighten all clamps. Finally, fit (x2) **hanger keepers (7)** onto each sideways hanger.
16. Recommended: Secure slip-fit connections with a 1-inch tack weld then spray high-temp paint over each weld to prevent rust and premature corrosion.



Congratulations, the installation of your FLOWMASTER performance exhaust system is now complete!





Installation Diagram  
**717935**  
2015-20 DODGE CHARGER SRT  
6.2L, 6.4L ENGINES

