



# INSTRUCTIONS

## Valve Spring Kits for Dodge Gen III HEMI 5.7L Eagle, 6.2L Hellcat & 6.4L Apache

Part #s 7228CC-KIT, 7228TC-KIT, 7230CC-KIT, 7230TC-KIT, 26918CC-KIT, 26918TC-KIT

Thank you for choosing COMP Cams® products; we are proud to be your manufacturer of choice. Please read this instruction sheet carefully before beginning installation, and also take a moment to review the included limited warranty information. Contact us toll free at 1.800.999.0853 or at [www.compcams.com](http://www.compcams.com) under Tech Support with any questions.

The Gen III 5.7L, 6.2L & 6.4L HEMI has a unique valve spring installation height that incorporates slightly different geometry on the intake valve versus the exhaust valve. COMP Cams® has engineered specialized components for each application.



26918 Beehive™ Kits



7228 Conical Kits

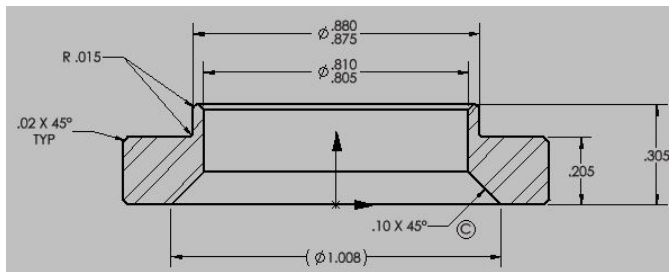


7230 Conical Kits

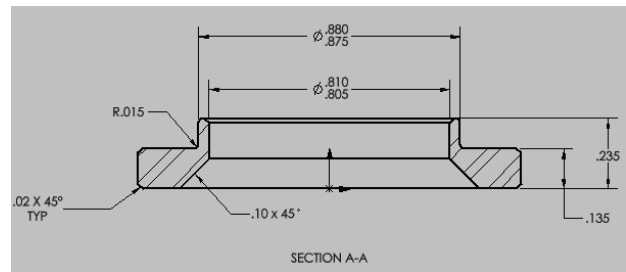
The valve spring kits have the **SAME VALVE SPRINGS** and **LOCATORS**, however you will be installing **DIFFERENT** valve spring **SHIMS** for the intake valve & the exhaust valve for 6.2L and 6.4L applications. The special arrangement of shims ensures that install heights are to spec across all 16 valves. Please use the table below to guide you in your installation.

Engine	Valve	Part #7228 Conical & #26918 Beehive™ (1.800" Install Height)		Part #7230 Conical (1.900" Install Height)	
		Spring Locators	Spring Shims	Spring Locators	Spring Shims
5.7L Eagle	INTAKE	4683 (.205")	NONE	4678 (.135")	NONE
	EXHAUST	4683 (.205")	NONE	4678 (.135")	NONE
6.2 Hellcat & 6.4L Apache	INTAKE	4683 (.205")	4815 (.060") + 4814 (.030")	4678 (.135")	4815 (.060")
	EXHAUST	4683 (.205")	4814 (.030") + 4813(.015")	4678 (.135")	4813 (.015")

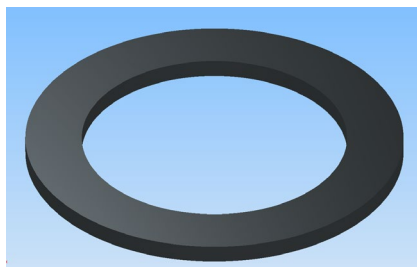
The spring locators look similar but can be easily identified by their over heights. When placed on the flat surface, the #4683 intake retainer will be ~.070" (~5/64") taller than the #4678 exhaust locator. See the diagrams below:



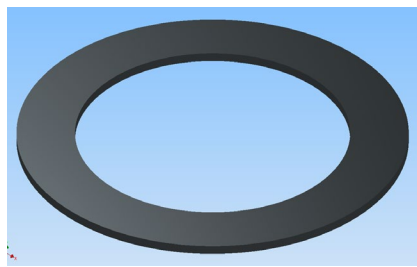
**#4683 INTAKE SEAT .205"**



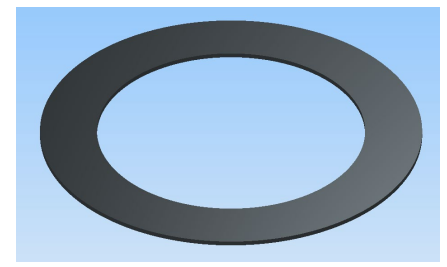
**#4678 EXHAUST SEAT .135"**



**#4815 SHIM .060"**



**#4814 SHIM .030**



**#4813 SHIM .015"**

## Social Media

Stay up-to-date with the latest COMP Performance Group™ company and product information by following us on any of our social media platforms.



Competition Cams, Inc. warrants that all of its products are free from defects in material and workmanship, and against excessive wear for a period of (1) one year from the date of purchase. This **limited warranty** shall cover the original purchaser.

**Competition Cams, Inc.'s obligation under this warranty is limited to the repair or replacement of its product.** To make a warranty claim, the part must be returned within (1) one year of purchase to the address listed below, freight prepaid. Items covered under warranty will be returned to you freight collect.

**It is the responsibility of the installer to ensure that all of the components are correct before installation. We assume no liability for any errors made in tolerances, component selection, or installation.**

**There is absolutely no warranty on the following:**

- A) Any parts used in racing applications;**
- B) Any product that has been physically altered, improperly installed or maintained;**
- C) Any product used in improper applications, abused or not used in conjunction with the proper parts.**

**There are no implied warranties of merchantability or fitness for a particular purpose.** There are no warranties, which extend beyond the description of the face hereof. Competition Cams, Inc. will not be responsible for incidental and consequential damages, property damage or personal injury damages to the extent permitted by law. Where required by law, implied warranties or merchantability and fitness are limited for a term of (1) one year from the date of original purchase.

This warranty gives you specific legal rights and you may also have other legal rights, which vary from state to state.

### **CALIFORNIA PROPOSITION 65 WARNING**

This product may contain one or more substances or chemicals known to the state of California to cause cancer, birth defects or other reproductive harm.