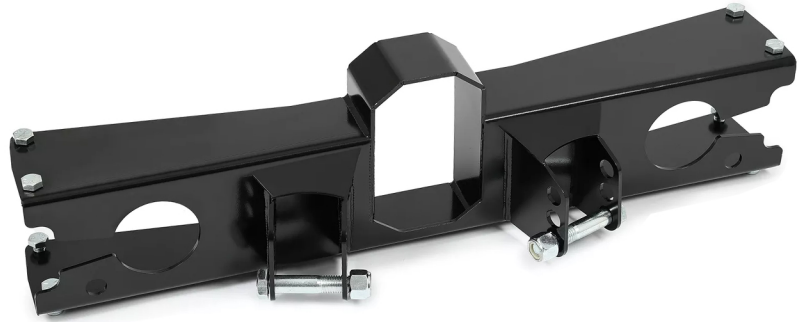


Part #568-7001 1963-72 CHEVY TRUCK TRAILING ARM CROSSMEMBER W/ 3 POSITION ANTI SQUAT BRACKETS

Parts List:

- 1 ea Cross Member
- 2 ea Anti-Squat Brackets
- 2 ea 3/4-10 x 4.5" GR* Bolts
- 2 ea 3/4-10 Lock Nuts
- 2 ea 3/4 Flat Washers
- 8 ea 1/2-13 x 1-1/2" GR8 Bolts
- 8 ea 1/2-13 Lock Nuts
- 8 ea 1/2 Flat Washers
- 12 ea 3/8"-16 x 1-1/4 GR8 Bolts
- 12 ea 3/8-16 Lock Nuts
- 12 ea 3/8 Flat Washers

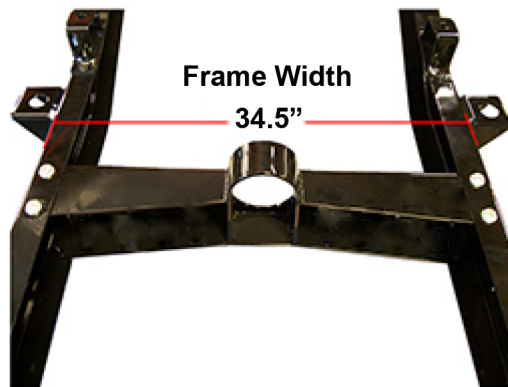


Installation Instructions:

- 1) Disconnect parking brake cable from cross member.
- 2) Remove drive shaft.
- 3) Remove the trailing arms from the cross member.
- 4) Remove the 14 rivets that secure the cross member to the frame. (save the bushings for reinstallation of trailing arms)
- 5) Rotate and remove the cross member from the frame.
- 6) Install the new cross member in the frame. (make sure mounts are arranged as in the picture)
- 7) Attach new cross member to frame with supplied hardware.
- 8) Reinstall trailing arms using original bushings and new supplied hardware.
- 9) Reinstall drive shaft.
- 10) Reinstall the parking brake cables routing them through the new cross member
- 11) Make sure to test the parking brake cables. Some adjustments may be required
- 12) Double check all hardware to make sure it has been torqued to the proper specifications.

Helpful Installation Tip

The frame width at the cross member is 34.5" wide. When the original cross member is removed, the frame will spring out. If possible, weld a piece of scrap metal across the frame to keep it in place during removal of cross member. If this is not an option, you may need to use a ratchet strap to pull the frame rails back into place in order to install your new cross member properly.



TORQUE SPECIFICATIONS

Normal Torque for Tightening
Stud Nuts and Bolts
Stud or Bolt Tightening Torque

DIAMETER	IN. LBS	FT. LBS
1/4	55-85	4.5-7
5/16	110-165	9-14
3/8	190-285	16-24
7/16	295-445	25-37
1/2	450-680	38-57
9/16	640-970	53-81
5/8	880-1300	73-110